



"Hecel Oyate Kin Nipi Kte"

"So That The People May Live"



Great Plains Tribal Leaders Health Board

Tribal Treatment Services Resource Guide

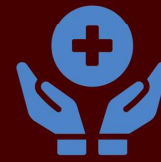
Tribal Treatment Center Resource Guide

Table of Contents

South Dakota Substance Abuse Treatment Programs	1
Treatment Center Maps	2
Anpetu Luta Otipi	3
Canku Teca Treatment Center	4
Crow Creek Tribal Hall	5
Dakotah Pride Center.....	6
Flandreau Behavioral Health Center	7
Substance Abuse Treatment Program Ft. Thompson.....	8
Lower Brule Counseling Service	9
Mayuteca and Youth and Family Tree.....	10
Native Healing Program	11
Addiction Treatment Services	12
RST Alcohol & Drug Treatment Program	13
Methamphetamine Rehabilitation Treatment Program	14
South Dakota Urban Indian Health.....	15
Standing Rock Treatment Program	16
Wakpa Waste Counseling Services	17



South Dakota Substance Abuse Treatment Programs



Prevention, Early Intervention, Outpatient, & Transitional/Supportive Housing Services

Tribe	Treatment Provider/Programs	Prevention Services	Early Intervention (Level 0.5)	Outpatient Treatment (Level 1)	Intensive Outpatient Treatment (Level 2.1)	Partial Hosp./Day Treatment (Level 2.5)	Transitional/Supportive Housing
Cheyenne River Sioux Tribe	Wakpa Waste Counseling Services (formerly Four Bands Healing Center)		Adult	Adult Adolescent			Adult
Crow Creek Sioux Tribe	Crow Creek Tribal Hall	Adult Adolescent		Adult	Adult		
Flandreau Santee Sioux Tribe	Flandreau Behavioral Health Center		Adult Adolescent	Adult Adolescent			
Lower Brule Sioux Tribe	Lower Brule Counseling Service	Adult Adolescent	Adult	Adult	Adult		Adult
Oglala Sioux Tribe	Anpetu Luta Otipi	Adult Adolescent	Adult Adolescent	Adult			Adult
	Native Healing Program	Adult Adolescent	Adult	Adult	Adult		
Rosebud Sioux Tribe	RST Alcohol & Drug Treatment Program	Adult				Adult	
	Methamphetamine Rehabilitation Treatment Program	Adult	Adult				
Sisseton Wahpeton Oyate	Dakotah Pride Center						Adult
	Mayuteca	Adult	Adult				
	Youth and Family TREE	Adult Adolescent	Adult Adolescent	Adult Adolescent	Adult Adolescent	Adolescent	
Standing Rock Sioux Tribe	Standing Rock Treatment Program		Adult	Adult	Adult		
Yankton Sioux Tribe	Canku Teca Treatment Center			Adult			

Other Programs	Treatment Provider/Programs	Prevention Services	Early Intervention (Level 0.5)	Outpatient Treatment (Level 1)	Intensive Outpatient Treatment (Level 2.1)	Partial Hosp./Day Treatment (Level 2.5)	Transitional/Supportive Housing
South Dakota Urban Indian Health		Adult Adolescent		Currently Not Offering			
		Adult Adolescent					
Ft. Thompson Service Unit - Substance Abuse Treatment Program		Adult Adolescent					
Pennington County Sheriff's Office - Addiction Treatment Services		Adult Adolescent		Adult			

Prevention, Early Intervention, Outpatient services, and Transitional/Supportive Housing services

Tribe	Treatment Provider/Programs	Clinically Managed Low-Intensity Residential Treatment (Level 3.1)	Clinically Managed Population Specific High-Intensity Residential Services (Level 3.3)	Clinically Managed Medium/High-Intensity Residential Treatment (Level 3.5)	Medically Monitored High-Intensity Treatment (Level 3.7)
Oglala Sioux Tribe	Anpetu Luta Otipi	Adults		Adults	Adults
Rosebud Sioux Tribe	Methamphetamine Rehabilitation Treatment Program	Adults	Adults	Adults	Adults
Sisseton Wahpeton Oyate	Dakotah Pride Center				Adults

Indian Health Services

Youth Regional Treatment Center- Great Plains Area-IHS @ Wakpala, SD	Adolescents	Adolescents	Adolescents	Adolescents	Adolescents
--	-------------	-------------	-------------	-------------	-------------



South Dakota Tribal Treatment Centers

This map provides locations and program information about substance abuse treatment centers available to tribal members in the state of South Dakota.



This information is up to date as of January 2020.

Questions or Comments:
amanda.flores@gptchb.org or sarah.shewbrooks@gptchb.org



The lead tribal addiction treatment organization.

Works in collaboration with federal, state, nonprofit, and intra-tribal partners while utilizing best practices and latest behavioral health literature to effectively reduce the health, economic, and social burden attributed to substance abuse disorder.

Anpetu Luta Otipi

Oglala Sioux Tribe

Locations

Administrative Office: Kyle, SD

Outpatient Treatment Centers: Kyle, Pine Ridge Village, Wanblee, and Martin, SD

Addiction Recovery Services: Kiyuksa Juvenile Correctional Facility in Kyle, SD and at the Adult Offender Facility in Pine Ridge, SD

Intensive Inpatient Facility: Kyle, SD

Services

Adolescents

- Prevention Services
- Early Intervention (L 0.5)

Adults

- Prevention Services
- Early Intervention (L 0.5)
- Outpatient Treatment (L 1)
- Clinically Managed Low-Intensity Residential Treatment (L 3.1)
- Clinically Managed Medium/High-Intensity Residential Treatment (L 3.5)
- Medically Monitored High-Intensity Treatment (L 3.7)
- Transitional/Supportive Housing

CONTACT

 605.455.2331

 <https://www.anpetuluta.org>





Uses indigenous culturally specific chemical addition philosophy that promotes holistic health.

Canku Teca Treatment Center

Yankton Sioux Tribe

Location

38341 SD Highway 50, Lake Andes, SD 57356

Services

Adults

Outpatient Treatment (L 1)

CONTACT

 605.487-7841

 halfway@charles-mix.com

 <http://cankuteca.tripod.com/cankuteca.html>





Crow Creek Tribal Hall

Crow Creek Sioux Tribe

Location

Crow Creek, South Dakota

Services

Adolescents

- Prevention Services

Adults

- Prevention Services
- Outpatient Treatment (L 1)
- Intensive Outpatient Treatment (L 2.1)

CONTACT

 605.245-2221

 www.crowcreekconnections.org





Offers culturally-sensitive residential substance abuse treatment for Sisseton Wahpeton Oyate tribal members.

Dakotah Pride Center

Sisseton-Wahpeton Oyate

Location

Adult Inpatient: 388 Dakota Avenue, Agency Village

Adult Outpatient: 420 Dakota Avenue, Agency Village

Adolescent Program: 420 Dakota Avenue, Agency Village

Services

Adolescents

- None

Adults

- Intensive Outpatient Treatment (L 2.1)
- Transitional/Supportive Housing
- Medically monitored High-Intensity Treatment (Level 3.7)
- Transitional/Supportive Housing

CONTACT

 605.698.3917

 dpc@venturecomm.net

 <https://www.swo-nsn.gov/departments/human-services-department/dakotah-pride/>





Provides
Outpatient Level 1
services and
below.

Includes:

Treatment Needs
Assessment, Moral
Recognition
Therapy, Cognitive
Behavioral
Interventions for
Substance Abuse,
aftercare, and
individual
counseling.

Flandreau Behavioral Health Center

Flandreau Santee Sioux Tribe

Location

403 W. Broad Avenue, Flandreau, SD 57028

Services

Adolescents

- Early Intervention (L 0.5)
- Outpatient Treatment (L 1)

Adults

- Early Intervention (L 0.5)
- Outpatient Treatment (L 1)

CONTACT

 605.997.3844





Provides treatment needs assessments, referrals, individual outpatient services, and aftercare.

Substance Abuse Treatment Program

Ft. Thompson Service Unit

Location

Ft. Thompson, South Dakota

Services

Adolescents

- Early Intervention (L 0.5)
- Outpatient Treatment (L 1)
- Prevention Services

Adults

- Early Intervention (L 0.5)
- Outpatient Treatment (L 1)
- Prevention Services

CONTACT

 605.245.1546





Provides
outpatient and
support services.

Lower Brule Counseling Service

Lower Brule Sioux Tribe

Location

187 Oyate Circle, PO Box 244, Lower Brule, SD 57548

Services

Adolescents

- Prevention Services

Adults

- Prevention Services
- Early Intervention (L 0.5)
- Outpatient Treatment (L 1)
- Intensive Outpatient Treatment (L 2.1)
- Transition/Supportive Housing

CONTACT

 605.473.8000





Offers culturally-sensitive residential substance abuse treatment for Sisseton Wahpeton Oyate tribal members.

Mayuteca and Youth and Family TREE

Sisseton-Wahpeton Oyate

Location

Agency Village, South Dakota

Mayuteca Services

Adolescents

- None

Adults

- Prevention Services
- Early Intervention (Level 0.5)

Youth and Family TREE Services

Adolescents

- Prevention Services
- Early Intervention (L 0.5)
- Outpatient Treatment (L 1)
- Intensive Outpatient Treatment (L 2.1)
- Partial Hospitalization/Day Treatment (L 2.5)

Adults

- Prevention Services
- Early Intervention (L 0.5)
- Outpatient Treatment (L 1)
- Intensive Outpatient Treatment (L 2.1)

CONTACT

 605-698-2110

 dpc@venturecomm.net

 <https://www.swo-nasn.gov/departments/human-services-department/dakotah-pride/>





An outpatient alcohol and drug treatment program that offers treatment needs assessments, intensive outpatient treatment, aftercare, DUI classes, co-dependency workshops, and individual counseling.

Native Healing Program

Oglala Sioux Tribe

Location

1205 East St.James Street, Rapid City, SD 57701

Services

Adolescents

- Prevention Services

Adults

- Prevention Services
- Early Intervention (L 0.5)
- Outpatient Treatment (L 1)
- Intensive Outpatient Treatment (L 2.1)

CONTACT

 605.342-8925

 nhp@nativehealingprogram.net





Offers clinically-managed detoxification programs, intensive meth treatment, DUI classes, Cognitive Behavioral Intervention for Substance Abuse programming, and Moral Reconciliation Therapy.

Addiction Treatment Services

Pennington County Sheriff's Office

Location

321 Kansas City Street Suite 110, Rapid City, SD 57701

Services

Adolescents

- None

Adults

- Early Intervention (L 0.5)
- Intensive Outpatient Treatment (L 2.1)

CONTACT

 605.394.6128

 <https://www.pennco.org/ccadp/>





*A Substance Abuse
Residential Rehab
Facility Provides
Treatment to
people with drug
addiction and
other substance
abuse problems*

RST Alcohol & Drug Treatment Program

Rosebud Sioux Tribe

Location

7 Hospital Lane, Rosebud, SD 57570

Services

Adolescents

- None

Adults

- Prevention Services
- Partial Hospitalization/Day Treatment (L 2.5)

CONTACT

 605.747.2342





A bio-psycho-social spiritual program that is built on a foundation of Lakota culture.

Uses a Seven Direction treatment model that totals 16 weeks.

Methamphetamine Rehabilitation Treatment Program

Rosebud Sioux Tribe

Location

#7 Hospital Lane, Rosebud, SD, 57570

Services

Adolescents

- None

Adults

- Prevention Services
- Early Intervention (L 0.5)
- Clinically Managed Low-Intensity Residential Treatment (L 3.1)
- Clinically Managed Population Specific High-Intensity Residential Services (L 3.3)
- Clinically Managed Medium/High Intensity Residential Treatment (L 3.5)
- Medically Monitored High-Intensity Treatment (L 3.7)

CONTACT

 605.747.2320





An integrated medical and behavioral health clinic that provides basic medical services along with care coordination, mental health, substance abuse counseling, and cultural services.

South Dakota Urban Indian Health

Location

Sioux Falls, South Dakota
Pierre, South Dakota

Services

Adolescents

- Early Intervention (L 0.5)

Adults

- Early Intervention (L 0.5)

CONTACT



Sioux Falls: 605.339.0420
Pierre: 605.224.8841



<https://sduih.org/>





Programming includes a 6-week outpatient treatment program with aftercare upon treatment completion.

Standing Rock Treatment Program

Standing Rock Sioux Tribe

Location

9307 Highway 24, Fort Yates, ND 58538

Services

Adolescents

- None

Adults

- Early Intervention (L 0.5)
- Outpatient Treatment (L 1)
- Intensive Outpatient Treatment (L 2.1)

CONTACT

 701.854.7219





Formerly Four Bands
Healing Center

Offers 12 week
Outpatient program
with weekly classes
and therapeutic
groups.

Includes both
addiction and mental
wellness in treatment
planning.

Wakpa Waste Counseling Services

Cheyenne River Sioux Tribe

Location

24276 166th Street, Eagle Butte, SD 57625

Services

Adolescents

- Outpatient Treatment (L 1)

Adults

- Early Intervention (L 0.5)
- Outpatient Treatment (L 1)
- Transition/Supportive
Housing

CONTACT

 605.964.0778



